

公司介绍 Company Introducing

河北义硕建材科技有限公司成立于2017年，总部位于河北省辛集市丝网产业园。是河北省省级“专精特新”重点培育企业和高新技术企业，专注于建材科技研发与生产。公司核心业务涵盖工业隔离防护设施与仓储物流设备两大领域，公司拥有18项专利（含8项发明专利），采用全自动激光切割、机械手焊接及静电喷涂工艺，显著提升生产效率和安全性。通过ISO 9001质量、ISO 14001环境及ISO 45001职业健康安全三重认证，产品覆盖国内地铁、工厂、仓储空间管理、体育场馆及高速公路、高安全场所隔离网项目。

Hebei Yishuo Building Materials Technology Co., Ltd. was established in 2017 and its headquarters is located in the Wire Mesh Industrial Park of Xinji City, Hebei Province. It is a provincial-level "Specialized, Advanced, Innovative, and High-Quality" key cultivation enterprise and a high-tech enterprise in Hebei Province, specializing in the research and production of building materials technology. The company's core business covers two major fields: industrial isolation protection facilities and warehousing and logistics equipment. The company holds 18 patents (including 8 invention patents), and adopts fully automatic laser cutting, mechanical hand welding and electrostatic spraying processes, significantly improving production efficiency and safety. Through ISO 9001 quality, ISO 14001 environment and ISO 45001 occupational health and safety triple certifications, its products cover domestic subway, factories, warehouse space management, sports venues, expressways, high-security site isolation net projects.

联系我们 CONTACT US

☎ 13671956111

✉ matelx@yishuofence.com

🌐 www.yishuofence.com



义硕护栏
Yishuo Fence
你的护栏专家
Your Fencing partner

OEM&ODM Source Factory 源头工厂

Your One-stop Fencing Solution Provider
您的一站式围栏解决方案供应商



1 Repurchase(回购)
95%

2 Cooperation countries
(合作国家)
100+

3 Partners(合作伙伴)
10,000+

先进的生产控制系统

Advanced production control system

全面的售后服务体系

Comprehensive after-sales service system



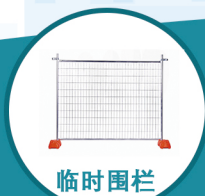
Exhibition 展会



Certificate 证书



主要产品 Main products



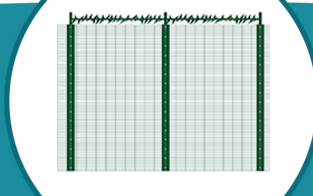
临时围栏

TEMPORARY
FENCE



勾花围栏

CHAIN LINK
FENCE



防攀爬围栏

ANTI CLIMB FENCE



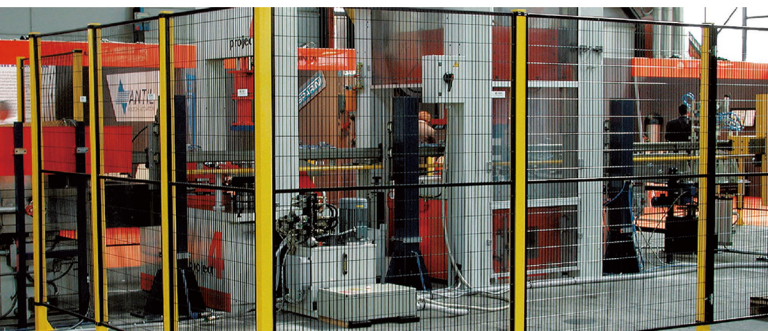
金属网围栏

WELDED WIRE
MESH FENCE



养殖围栏

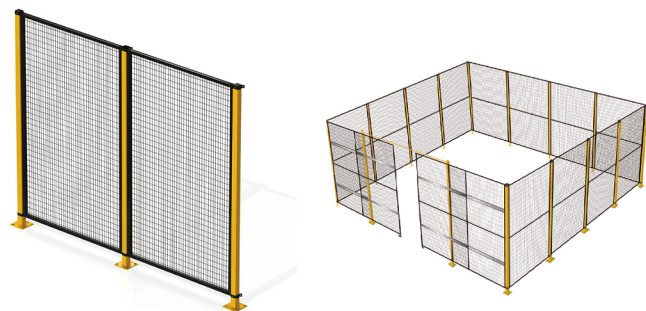
LIVESTOCK
FENCE



Machine And Robot Safety Barrier Fence 机器人安全围栏

Robot fence, also called robot fencesafety fence, if it is used in the workshop,also known as workshop aluminum profileisolation net, workshop partition, alumi.num alloy fence, automatic fence net,etc. Without expansion screws, industrialaluminum profiles are generally used asthe guardrail frame, with mesh in the

机器人围栏，又称机器人安全围栏，若应用于车间，则被称为车间铝型材隔离网、车间隔断、铝合金合金围栏、自动围栏网等。它无需膨胀螺丝，通常以工业铝型材作为防护栏的框架，并在其中设置网状结构。



FEATURES * 特点

- Reasonable area planning forefficient storage.
- Modular installtion is adopted forflexible installtion and remov-al. itcan be both temporarlllyused and reused
- Mesh panels comes in a varley ofhelghts andwidths for your sult to dimenslons of al tallor made warehouse partitlon systems.

- 合理的区域规划有助于实现高效存储。
- 采用模块化安装方式，便于安装和拆卸。既可临时使用，也可重复利用。
- 网状面板有多种高度和宽度可供选择，以满足不同尺寸的大型仓库分区系统需求。

SPECIFICATIONS * 规格说明

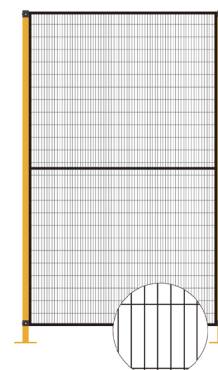
Panel Height(面板高度):
2000/2200/2500 mm.

Panel Width(面板宽度):
250/500/750/1000/1250/1500/1750/2000 mm.

Wire Diameter(线径):
3.0/4.0/5.0 mm.

Post(柱):
40*40/60*60/customized(定制的).

Color(颜色):
Standard is RAI 9005 blackOther RAI colors are available.
(标准色为 RAI 9005 黑色。此外，还有其他 RAI 颜色可供选择。)



Mesh size(网格尺寸):
20*50m,20*100mm,30*30mm, 40*40mm....

Safety distance
(安全距离)



CLIPS TYPE * 夹子类型



Consists of a clip secured by aspecial screw and captive nut. Theclip can slide along the up-right butcannot be separated from it.

由一个通过特殊螺丝和卡紧螺母固定在一起的夹子组成。该夹子可以在立柱上滑动，但不能与立柱分离。

TYPE(类型): C-40S C-50S C-60S C-80S



Fixed in position with a bolt from thebackside of the brack-et. Move the bolt the side position to create a corner.



用位于支架背面的螺栓将其固定在指定位置。将螺栓移至侧面位置以形成一个角。



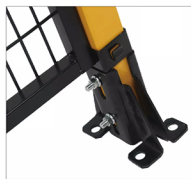
An easy-to-install,innovative and economical solution, MDF combines the40x40 posts with a frameless, specially-shaped mesh panel and is designecfor quick and easy assembly.



这是一种易于安装、创新且经济实惠的解决方案。MDF 将 40x40 的立柱与无框、特殊形状的网状面板相结合，并经过设计，便于快速且简便地组装。

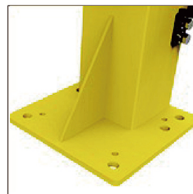


KICK PLATE TYPE * 踢盘类型

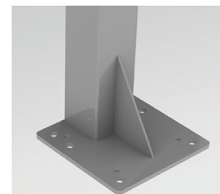


The robust structure prevents the outlet (or inlet) of potential dangerous materials through the usually free space between panel and floor.

坚固的结构能够防止可能具有危险性的物质从面板与地板之间的通常的空隙中泄漏出来。

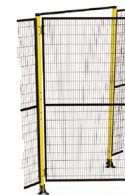


Our strongest post. Four holes fixing to the floor and extra holes for alignment adjustment bolts.



我们的最坚固部件。四个孔固定在地板上，还有额外的孔用于调整螺栓。

DOORS TYPE * 门的类型

SINGLE-LEAF
单层

SLIDING DOORS WITH LOWER GUIDE

带有较低导轨的滑动门

DOUBLE-LEAF
双层

SLIDING DOORS WITH UPPER GUIDE

带有上部导向装置的滑动门

FOLDING DOORS
折叠门

OPPOSING SLIDING DOORS WITH UPPER GUIDE

用上部导向装置阻挡的滑动门

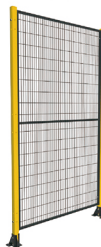
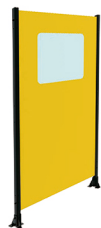


Strong post with four holes flexible fixing to the floor



坚固的带有四个孔洞的脚垫，可灵活固定在地板上。

PANELS * 面板

MESH
网格SHEET PANEL
薄板SHEET METAL+MESH
金属薄板+网格SHEET METAL+VIEWING POST
金属薄板+观察柱GASKET
密封圈Dust cap
防尘盖

LOCKS TYPE * 锁的类型



Crowd Control Barrier

人群控制屏障

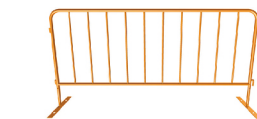
Crowd control barriers, made of steel pipes, has firm structure and corrosive resistance surface for secure pedestrian, vehicles and equipment safety in the crowds and heavy traffic.



由钢管制成的人群控制隔离栏具有坚固的结构和耐腐蚀的表面，能够确保人群、车辆和设备在拥挤和繁忙交通环境中的安全。

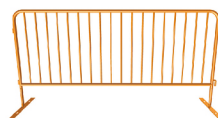
Different Type

不同的类型



Length: 2.2m .
Height: 1.1 m.
Main frame: 25 mm ODx1.5 mm thickness.
Grill: 10 upright of 16mm OD x1.2 mm thickness.
Upright spacing: 200 mm.

长度：2.2 米。
高度：1.1 米。
主框架：外径 25 毫米，厚度 1.5 毫米。
格栅：10 个立柱，外径 16 毫米，厚度 1.2 毫米。
立柱间距：200 毫米。



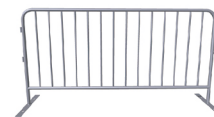
Length: 2.2m .
Height: 1.1 m.
Main frame: 32 mm ODx1.5 mm thickness.
Grill: 18 upright of 16mm OD x1.2 mm thickness.
Upright spacing: 110 mm.

长度：2.2 米。
高度：1.1 米。
主框架：外径 32 毫米×厚度 1.5 毫米。
格栅：18 根，每根长 16 毫米外径×1.2 毫米厚度
立柱间距：110 毫米。



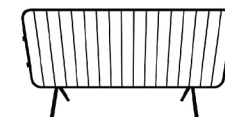
Length: 2.5m .
Height: 1.1 m.
Main frame: 32 mm ODx1.5 mm thickness.
Grill: 18 upright of 16mm OD x1.2 mm thickness.
Upright spacing: 140 mm.

长度：2.5 米。
高度：1.1 米。
主框架：外径 32 毫米×厚度 1.5 毫米。
格栅：18 根，每根长 16 毫米外径×1.2 毫米厚度
立柱间距：140 毫米。



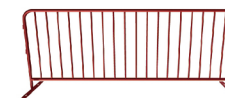
Length: 2m .
Height: 1.1 m.
Main frame: 32 mm ODx1.5 mm thickness.
Grill: 14 upright of 16mm OD x1.2 mm thickness.
Upright spacing: 106.9 mm.

长度：2 米。
高度：1.1 米。
主框架：外径 32 毫米×厚度 1.5 毫米。
格栅：14 个立柱，每个立柱外径 16 毫米×厚度 1.2 毫米。
立柱间距：106.9 毫米。



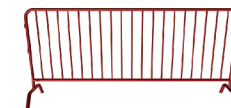
Length: 3.2m .
Height: 1.1 m.
Main frame: 38 mm ODx1.5 mm thickness.
Grill: 16 upright of 16mm OD x1.2 mm thickness.
Upright spacing: 127 mm.

长度：3.2 米。
高度：1.1 米。
主框架：外径 38 毫米×厚度 1.5 毫米。
格栅：16 个立柱，每个立柱外径 16 毫米×厚度 1.2 毫米。
立柱间距：127 毫米。



Length: 2.6m .
Height: 1.1 m.
Main frame: 38 mm ODx2 mm thickness.
Grill: 18 upright of 16mm OD x1.2 mm thickness.
Upright spacing: 129 mm.

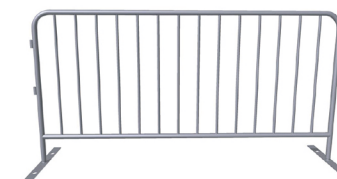
长度：2.6 米。
高度：1.1 米。
主框架：外径 38 毫米×厚度 2 毫米。
格栅：18 根，每根长 16 毫米外径×1.2 毫米厚度。
格栅间距：129 毫米。



Length: 2.6m .
Height: 1.1 m.
Main frame: 38 mm ODx2 mm thickness.
Grill: 19 upright of 16mm OD x1.2 mm thickness.
Upright spacing: 121 mm.
长度：2.6 米。
高度：1.1 米。
主框架：外径 38 毫米×厚度 2 毫米。
格栅：19 根，每根长 16 毫米外径×1.2 毫米厚度。
格栅间距：121 毫米。

SPECIFICATION * 规格说明

Length (长度)	2m, 2.1m, 2.2m, 2.5m
Height (高度)	900mm, 1000mm, 1100mm, 1200mm, etc
Outer Tubing (内管)	20mm, 25mm, 32mm, 38mm OD, etc
Inner Tubing (外管)	12mm, 14mm, 16mm, 20mm OD, etc
Spacing (间距)	110mm, 115mm, 120mm, 190mm, 200mm
Feet (脚)	Welded Fixed feet, Flat feet, Bridge type feet
Connection 连接	Metal Hook 焊接固定脚、平脚、桥型脚、金属钩
Surface Treatment 表面处理	Hot Dipped Galvanized / Electric Galvanized + Polyester Coated 热浸镀锌 / 电镀锌 + 聚酯涂层



APPLICATION * 应用



FEATURE * 特征

Flexible Structure

灵活的结构

Combine as many as crowd control barriers you want for your use without any difficult.

您可以随意组合所需的任何数量的人群控制隔离栏，操作起来非常方便。



Flexible Feet Choice

Fixed or removable feet for choice. Bridge, flat or wheel removable feet options.

可选择固定式或可拆卸式的脚轮。有桥型、平型或带轮的可拆卸脚轮可供选择。



灵活的脚步选择



Pedestrian & Vehicle Gate

行人&车辆入口

Pedestrian or vehicle gates can be supplied according to your sizes to your sizes.

可以根据您的尺寸提供行人通道门或车辆通道门。

Explosion-proof barriers

防爆铁马

This high-quality aluminum barrier is designed for quick installation and features a modular structure, making it portable and ideal for outdoor festivals and road safety. With a load-bearing capacity of 200KG.



这种高品质的铝质隔离栏设计便于快速安装，其采用模块化结构，便于移动，非常适合户外活动和道路安全防护。其承载能力可达 200 千克。

FEATURE * 特征

- 1.Foldable:Packs flat(10cmheight) for easy transport and storage.
- 2.Semi-circle top rail:Easy to hold.
- 3.Smaller holes on vertical perforated plate to avoid hurting fingers.
- 4.Longer ramp:Extended ramp on the base plate to prevent Tripping over.
- 5.Fall backward prevention step plate:More safety When standing.



- 1.可折叠：可折叠成平状（高度 10 厘米），便于运输和存放。
- 2.半圆形扶手：易于抓握。
- 3.垂直穿孔板上的小孔是为了避免手指受伤而设置的。
- 4.更长的坡道：在底板上增设的延长坡道，以防止滑倒。
- 5.向后跌倒预防垫：站立时更安全。

Details * 细节



Performance isolation / Mall isolation / Station isolation

性能隔离 / 购物中心隔离 / 站点隔离



Prohibition of unauthorized climbing

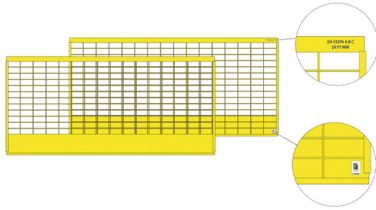
未经许可禁止攀爬

Photos * 照片



Edge protection Fence 边缘防护围栏

Edge Protection Barrier is Common usage scenarios of edge protection systems: commercial construction, industrial construction, residential construction, infrastructure construction, concrete edge protection, steel edge protection timber frames edge protection.



边缘防护屏障是边缘防护系统常见的应用场景：商业建筑、工业建筑、住宅建筑、基础设施建设、混凝土边缘防护、钢结构边缘防护、木框架边缘防护。

Detail * 细节

Type (类型)

Common specification (通用规格)

Fence height (围栏高度)	1m-1.2m
Fence width/length (围栏宽度/长度)	2m-3m
Wire diameter (线材直径)	4mm-7mm
mesh size (网格尺寸)	50x150mm, 80x160mm etc.
Post (柱)	42mm or 48mm, wall thickness 1.5mm-2mm
Material (材料)	hot dipped galvanized / Powder coated 热镀锌/粉末喷涂
Surface treatment (表面处理)	All joints are welded and sprayed with a galvanized paint to cover any exposed metal 所有接头均采用焊接方式连接，并涂上镀锌漆以覆盖任何裸露的金属部分。



SPECIFICATION * 规格说明

Wire Diameter	Mesh size	Length	Height	Round Post	Square Post
5mm x 4mm	75mm x 75mm	1.5m	1.3m		
6mm x 5mm	50mm x 100mm	2.0m	1.4m	48x 2mm	50x50x2mm
8mm x 6mm	50mm x 200mm	2.5m	1.5m	60 x 2mm	60 x60 x 2mm
		3.0m	1.6m		

线径	网格尺寸	长度	高度	圆柱形柱子	方形柱
5mm x 4毫米	75mm x 75毫米	1.5米	1.3米		
6mm x 5毫米	50mm x 100毫米	2.0米	1.4米	48x 2毫米	50x50x2毫米
8mm x 6毫米	50mm x 200毫米	2.5米	1.5米	60 x 2毫米	60 x60 x 2毫米
		3.0米	1.6米		

Photos * 照片

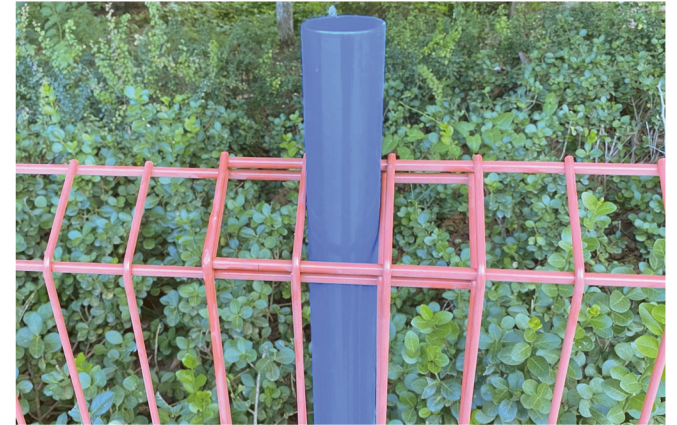


SPECIFICATION * 3. Технические требования

Wire Diameter	Mesh size	Length	Height	Bending Degree	Round Post
5mm x 4mm	75mm x 75mm	1.5m	1.2m		
6mm x 5mm	50mm x 100mm	2.0m	1.3m	60°	48x2mm
8mm x 6mm	50mm x 200mm	2.5m	1.4m	90°	60 x 2mm
	75mmx150mm	3.0m	1.5m	12°	

线径	网格尺寸	长度	高度	弯曲度	圆柱形柱子
5mm x 4mm	75mm x 75mm	1.5m	1.2m		
6mm x 5mm	50mm x 100mm	2.0m	1.3m	60°	48x2mm
8mm x 6mm	50mm x 200mm	2.5m	1.4m	90°	60 x 2mm
	75mmx150mm	3.0m	1.5m	12°	

Photos * 照片





3D Curved Mesh Fence
折弯护栏

3D Curved Mesh Fence also known as 3D security fence, it is a kind of specially designed welded wire mesh with V-shaped bending curves in its longitudinal direction. It is made of high quality carbon steel wires where wires in the horizontal and vertical direction are welded at their junctions to provide a rigid wire mesh fence.

3D 折弯护栏，又称 3D 安全围栏，是一种经过特别设计的焊接金属网，其纵向方向上具有 V 形弯曲的曲线。它由优质碳钢丝制成，水平和垂直方向上的钢丝在交界处通过焊接连接在一起，从而形成坚固的网状围栏。

SURFACE * 表面

Galvanized
镀锌



Powder coated
粉末涂层



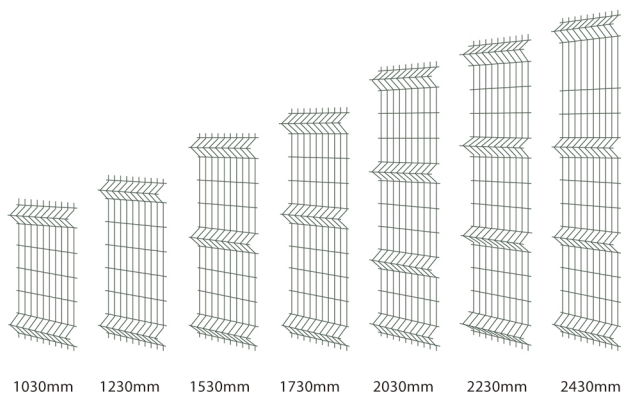
ACCESSORIES * 配件



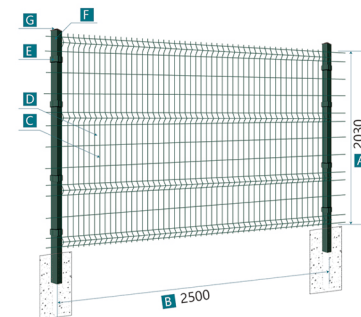
SPECIFICATION * 规格说明

Relations between fence height and the number of folds

围栏高度与折叠次数之间的关系



Height: 630 mm, 830 mm, 1030 mm, 1230 mm, 1530 mm, 1730 mm, 1830 mm, 2030 mm, 2430 mm
Width: 2000 mm, 2500 mm
Wire Diameter: 3.0 mm, 3.5 mm, 4.0 mm, 4.5 mm, 5.0 mm
Mesh opening: 50 x 100 mm, 50 x 150 mm, 50 x 200 mm, 75 x 100 mm, etc.
Clamp: metal clamp/anti-UV plastic clamp/ no clamp (for peach post)
Post Cap: metal cap / anti-UV plastic cap.



高度：630 毫米、830 毫米、1030 毫米、1230 毫米、1530 毫米、1730 毫米、1830 毫米、2030 毫米、2430 毫米
宽度：2000 毫米、2500 毫米
电线直径：3.0 毫米、3.5 毫米、4.0 毫米、4.5 毫米、5.0 毫米
网眼尺寸：50×100 毫米、50×150 毫米、50×200 毫米、75×100 毫米等
夹具：金属夹具/防紫外线塑料夹具/无夹具（用于桃形柱）
柱帽：金属帽/防紫外线塑料帽。

PHOTOES * 照片



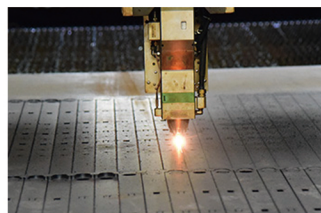


Estate Fencing is Perfect for country estates, farms, parkland and gardens. It is easy to install, fence posts are driven in or concreted and the rail then simply threaded through and welded. To assemble, you simply install a post (upright) with spade foot on every 1m and thread the horizontal rails through each post. The horizontal rails are notched and fall down into the slots in the posts, and then you simply knock a small clip in with a hammer to hold everything tight and securely.

庄园围栏非常适合乡村庄园、农场、公园绿地和花园使用。安装起来非常简便，只需将围栏柱打入地基或用混凝土固定，然后将栏杆穿过柱子并进行焊接即可。组装时，只需在每1米处安装一个带有铲形底座的立柱，并将水平栏杆穿过每个立柱。水平栏杆带有凹槽，会落入立柱的槽内，然后只需用锤子敲入一个小夹子，将所有部件牢固固定即可。



Detaila * 细节



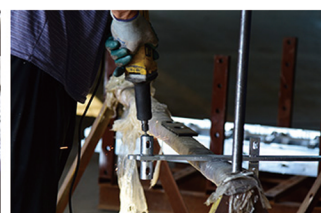
Laser cutting the middle post
对中间柱进行激光切割



Polishing
抛光



Punching
击打



Polishing
抛光

Post Top * 顶柱



Feature top

特色顶

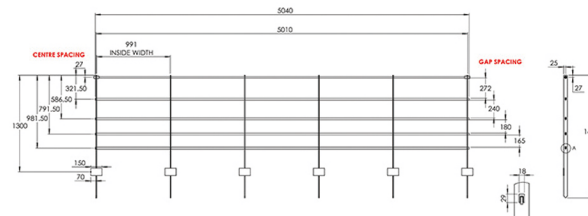
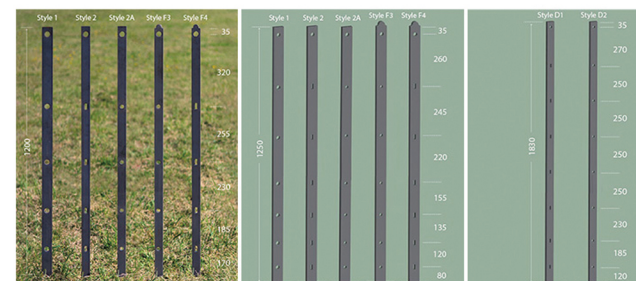


Flat top

平顶



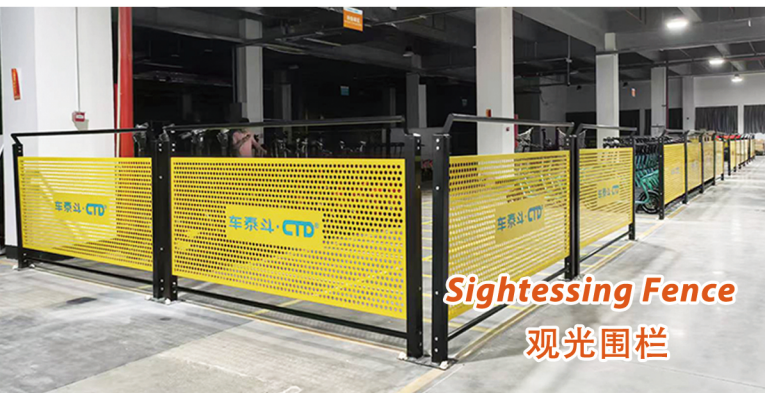
Specifications * 规格说明



Photos * 照片

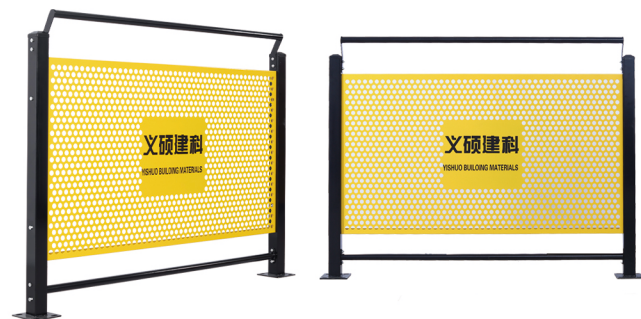


SIGHTSEEING FENCE 观光围栏



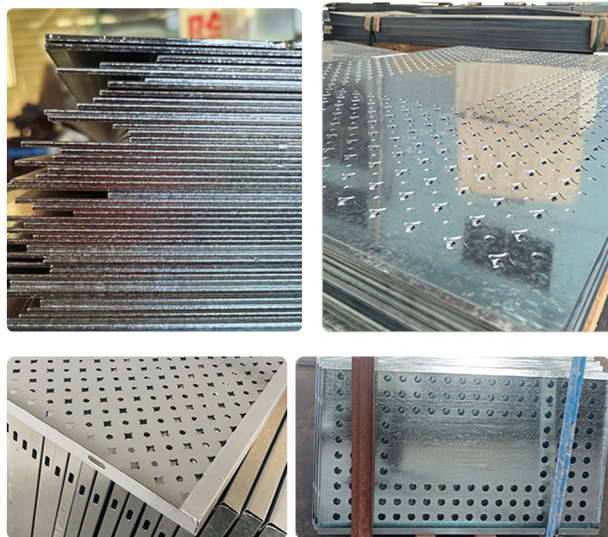
Tourist guardrails are installed in scenic spots, parks, viewing platforms and other places to ensure the safety of tourists, demarcate areas and also have the function of beautifying the environment. Safety protection: Prevent tourists from accidentally falling, such as in dangerous areas like cliff edges, bridges, and viewing platforms, which can effectively ensure personal safety; at the same time, it can prevent tourists from entering dangerous areas at will or trampling on vegetation, protecting the ecological environment.

在景区、公园、观景台等场所安装了游客防护栏，以保障游客的安全，划定区域，并且还具有美化环境的功能。安全防护：防止游客意外坠落，例如在悬崖边、桥梁和观景台等危险区域，这能有效保障人身安全；同时，还能防止游客随意进入危险区域或践踏植被，保护生态环境。



SIGHTSEEING FENCE 观光围栏

Material * 原料



Detaila * 细节



SIGHTSEEING FENCE 观光围栏

Customizable colors/logo
可定制颜色/标识
Electrostatic powder coating
静电喷塑



Photos * 照片





Name: Metal Chain wire Mesh Chicken yard hen House

Material: low carbon galvanized steel wire

Size: length*width*height

名称：金属链网式鸡舍母鸡围栏

材质：低碳镀锌钢丝

尺寸：长*宽*高

2*3*2m

The tarpaulin covers to protect from wind and rain, providing a stable and comfortable environment for the poultry.

这些防水布起到了防风防雨的作用，为家禽营造了一个稳定且舒适的生存环境。

Customizable Logo
可定制标识



Material * 原料



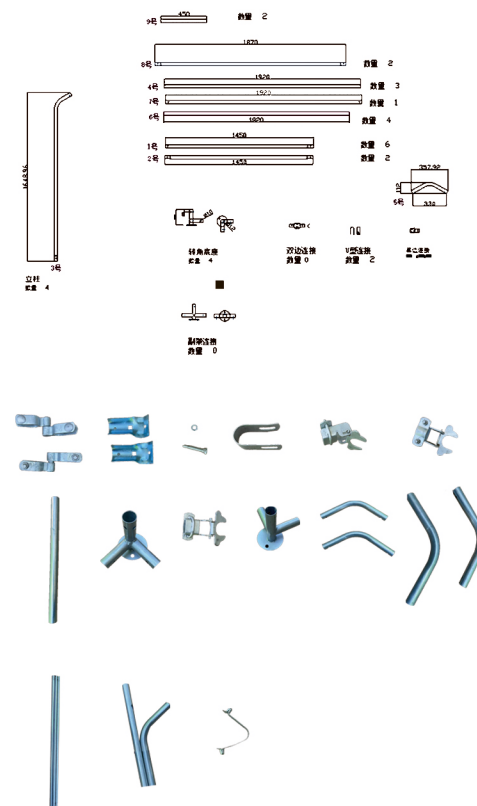
Details * 特点

The mesh ventilation design effectively promotes the circulation of air within the greenhouse.

这种网格通风设计有效地促进了温室内部空气的流通。



Accessories * 配件



Photos * 照片



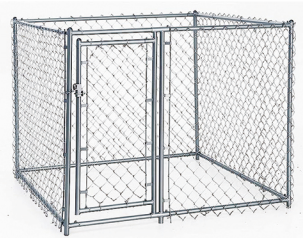
DOG CAGE 狗笼



Dog Cage
狗笼

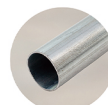
This large dog kennel provides ample exercise space while the chain link mesh all around helps prevent mischief and unexpected accidents, while enabling ventilation. Thanks to the sturdy and heavy-duty galvanized steel construction, this dog kennel is durable and built to last. The included top canopy, made of 100% polyethylene, is fire-resistant and UV protected, providing protection from sun, rain, snow and other weather conditions. The hinged door ensures extra security and safety for your dogs thanks to the lockable latch system. Assembly is really easy.

这个大型狗舍提供了充足的活动空间，四周的铁丝网设计有助于防止捣蛋行为和意外事故，同时还能保证通风。得益于坚固耐用的镀锌钢结构，这个狗舍非常耐用且经久不衰。附带的顶篷由 100% 聚乙烯材料制成，具有防火和防紫外线功能，能抵御阳光、雨水、积雪以及其他天气状况。铰链门确保了对狗狗的额外安全防护，得益于可锁定的门闩系统。组装起来非常简单。



DOG CAGE 狗笼

Material * 原料

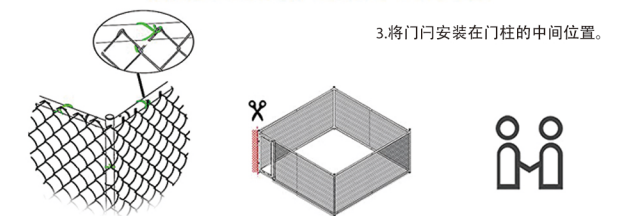
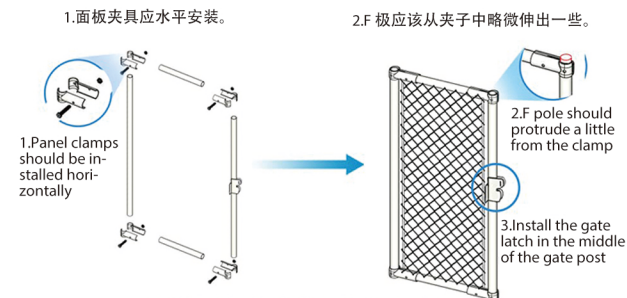


Detaila * 细节



DOG CAGE 狗笼

Installation * 安装



- Fix with metal fence ties every 3 holes
- 每隔 3 个孔用金属围栏扣固定一下
- The provided fence is longer than actually needed, so when installing the fence, please pull it tight enough and cut off the excess to make it stronger
- 所提供的围栏长度超过了实际所需的长度，所以在安装围栏时，请将其拉紧至合适程度，并剪掉多余的部分，以使围栏更加坚固。
- Install with 2 people
- 两人即可安装完成

specification * 规格说明

Material: Galvanized steel
Roof material: 100% PE
Overall dimensions: 299" x 75.6" x 88.6" (L x W x H)
Inner dimensions: 297.2" x 73.2" x 86.6" (L x W x H)
Wall height: 176.8"
Ground surface area: 157.2 ft²
Lockable latch system
Chain-link mesh sidewalls
Easy to assemble
Suitable for dogs

材料：镀锌钢
屋顶材料：100% 聚乙烯
整体尺寸：299 英寸 x 75.6 英寸 x 88.6 英寸
(长 x 宽 x 高)
内部尺寸：297.2 英寸 x 73.2 英寸 x 86.6 英寸
(长 x 宽 x 高)
墙高：176.8 英寸
地面面积：157.2 平方英尺
可锁定的锁扣系统
铁丝网侧墙易于组装





358 Fence
Anti climb fence
358围栏

358 high security fence, also known as anti-climb fence, is a kind of superior high tensile and high security welded wire mesh fence. The fence name 358 comes from its panel with a mesh opening of 3" x 0.5" and a wire diameter of 8-gauge (approximate to 76.2 mm x 12.7 mm x 4 mm). It is designed to be a robust, anti-climb and anti-cut barrier to provide high security protection.

358 型高安全性围栏，又称防攀爬围栏，是一种性能卓越、高强度且具有高安全性的焊接金属网围栏。该围栏的名称“358”源于其面板上的网孔尺寸为 3 英寸×0.5 英寸，以及线材直径为 8 号规格（约 76.2 毫米×12.7 毫米×4 毫米）。其设计旨在成为坚固、防攀爬且防切割的屏障，以提供高度的安全防护。

Anti-climb Performance

防滑性能



Anti-cut Performance

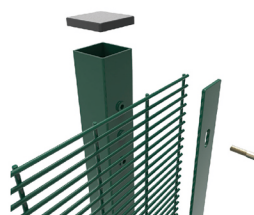
防割性能



DETAILS * 细节

Clamp bar connection

夹紧杆连接

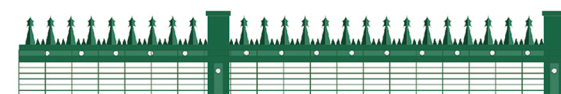
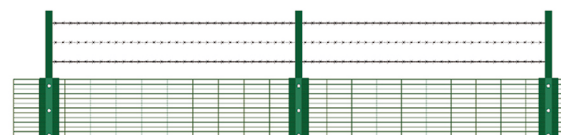


Spider bar connection

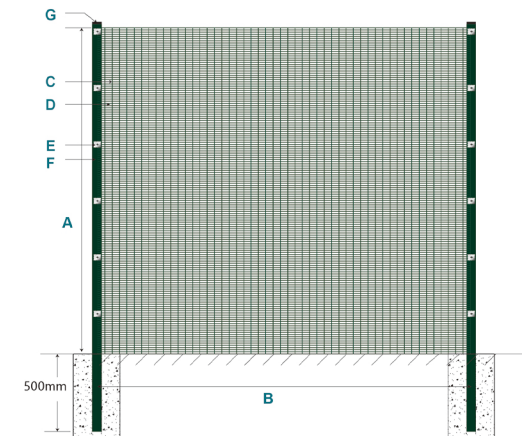
蜘蛛架连接件



ACCESSORIES * 配件



SPECIFICATIONS * 规格说明



Height: 1200-3500 mm

Width: 2000-3100 mm

Wire Diameter: 3.2 mm (10 gauge), 4.0 mm (8 gauge)

Mesh Opening: 12.7 x 76.2 mm (0.5" x 3")

Clamp: metal clamp/tension bar covered

Post: square post (60 x 60 x 2.0/2.5/3.0 mm, 80 x 80 x 2.0/2.5/3.0 mm);

rectangular post (40 x 60 x 2.0/2.5/3.0 mm, 40 x 80 x 2.0/2.5/3.0 mm, 60 x 80 x 2.0/2.5/3.0 mm, 80 x 100 x 2.0/2.5/3.0 mm)

Post Cap: metal cap / anti-UV plastic cap

高度：1200 - 3500 毫米

宽度：2000 - 3100 毫米

线径：3.2 毫米（10 号规格），4.0 毫米（8 号规格）

网眼尺寸：12.7 x 76.2 毫米（0.5 英寸 x 3 英寸）

夹具：金属夹具/张力杆覆盖

柱体：方形柱体（60 x 60 x 2.0/2.5/3.0 毫米，80 x 80 x 2.0/2.5/3.0 毫米）；

矩形柱体（40 x 60 x 2.0/2.5/3.0 毫米，40 x 80 x 2.0/2.5/3.0 毫米，60 x 80 x 2.0/2.5/3.0 毫米，80 x 100 x 2.0/2.5/3.0 毫米）

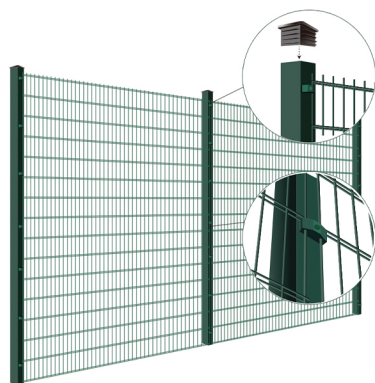
柱体帽：金属帽/防紫外线塑料帽





868 fence, also called welded double wire fence, 2D security fence, twin wire panel fencing. It is quite popular in Europe countries, like German. Looked from far away, the wire panel is like the regular fencing panel. Nevertheless, unlike traditional welded wire fence as 358 security fence and euro fence, 2D security fence panel welded with two horizontal wires is particularly strong and firm.

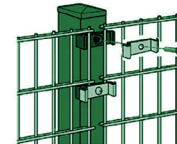
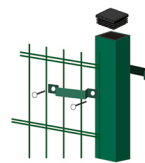
358型高安全性围栏，又称防攀爬围栏，是一种性能卓越、高强度且具有高安全性的焊接金属网围栏。该围栏的名称“358”源于其面板上的网孔尺寸为3英寸×0.5英寸，以及线材直径为8号规格（约76.2毫米×12.7毫米×4毫米）。其设计旨在成为坚固、防攀爬且防切割的屏障，以提供高度的安全防护。



SPECIFICATIONS * 规格说明

Height x Width panel(mm) 高度×宽度 面板(毫米)	Mesh size (mm) 网格尺寸(毫米)	Wire Diameter (mm) 线材直径(毫米)	Post Height (mm) 柱高(毫米)
630x2500	50x200	8x2+6 6x2+5	1100
830x2500	50x200	8x2+6 6x2+5	1300
1030x2500	50x200	8x2+6 6x2+5	1500
1230x2500	50x200	8x2+6 6x2+5	1700
1430x2500	50x200	8x2+6 6x2+5	1900
1630x2500	50x200	8x2+6 6x2+5	2100
1830x2500	50x200	8x2+6 6x2+5	2400
2030x2500	50x200	8x2+6 6x2+5	2600
2230x2500	50x200	8x2+6 6x2+5	2800
2430x2500	50x200	8x2+6 6x2+5	3000

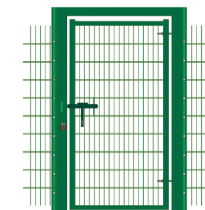
DETAILS * 细节

Flat Bar
扁钢条M-Shaped Plastic Clips
M形塑料夹子H-Shaped Plastic Clips
H形塑料夹子The Spider Clip
蜘蛛夹子Metal Clip
金属夹子

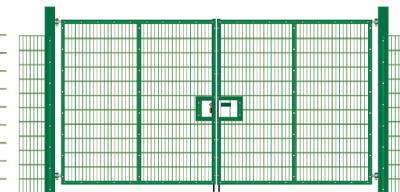
FENCE GATE * 栅栏门

Single-door entrance

Double-door entrance



单开门



双开门

PHOTOES * 照片

